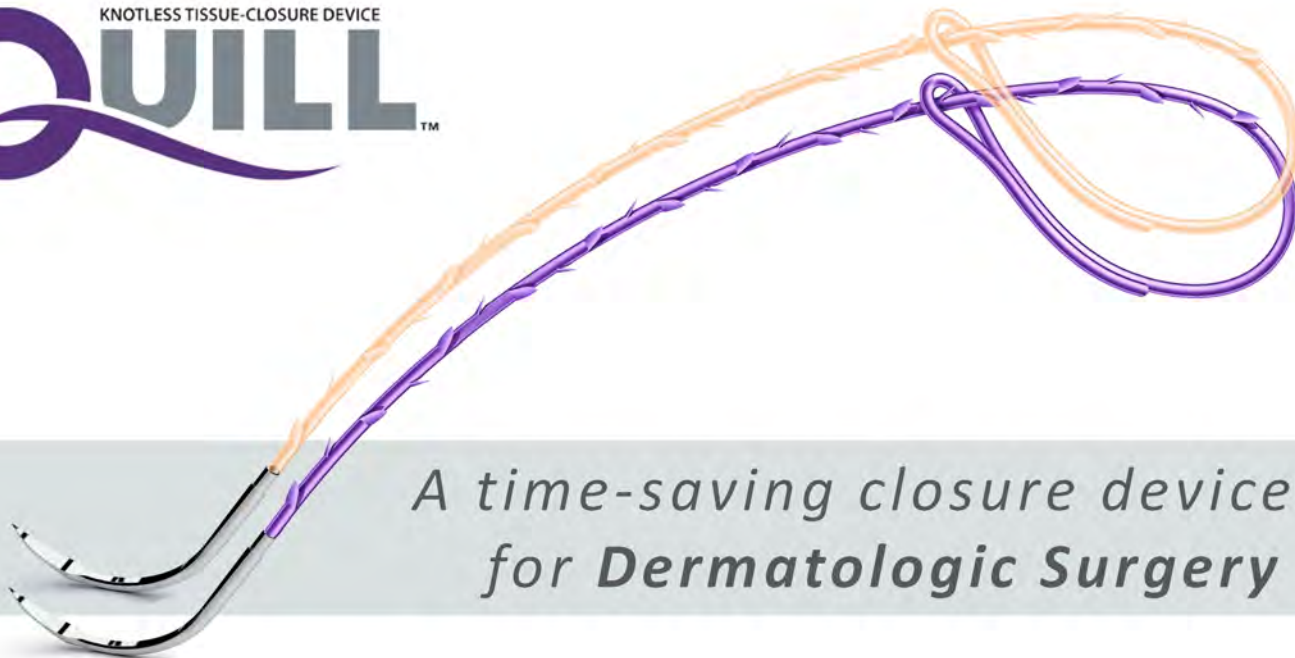


# Quill™ Knotless Tissue Closure Device for Dermatologic Reconstruction



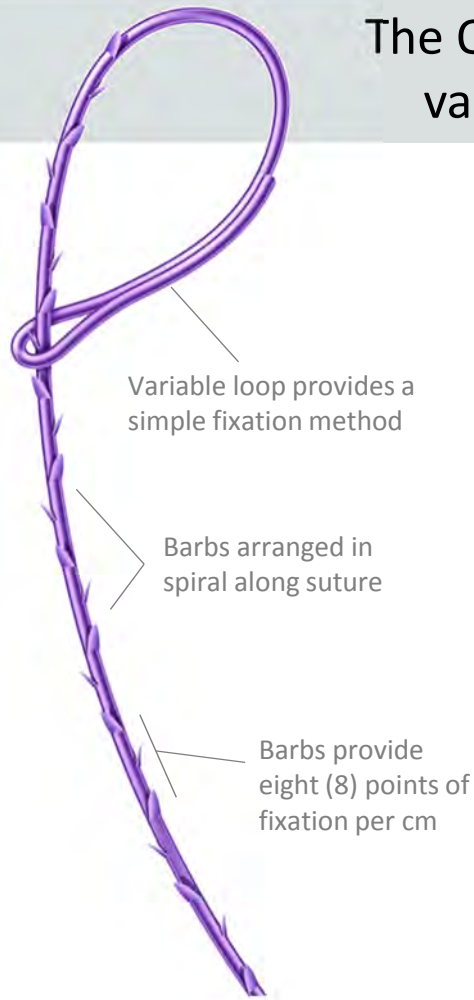
*A time-saving closure device  
for Dermatologic Surgery*



**SURGICAL  
SPECIALTIES**  
CORPORATION™

# Quill™ Knotless Tissue Closure Device

The Quill™ device **eliminates suture knots** saving valuable time and improving practice efficiency.



## Quill™ is ideal for these clinical scenarios:

- ✓ Where speed and efficiency are needed
- ✓ Wounds under high tension
- ✓ Older patients with friable tissue

## Key Benefits

### Time and cost savings:

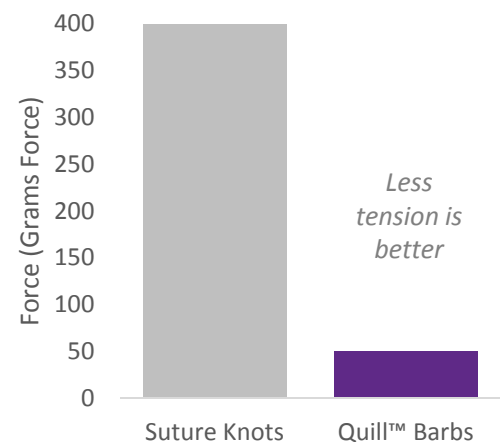
- Faster wound closure time.
- Security of an interrupted stitch with the speed of a running stitch.
- Eliminates need for surface suture.

### Better patient outcomes:

- Wound tension is evenly distributed across the barbs.
- Eliminates train-track scars.

## Tension at Fixation Point

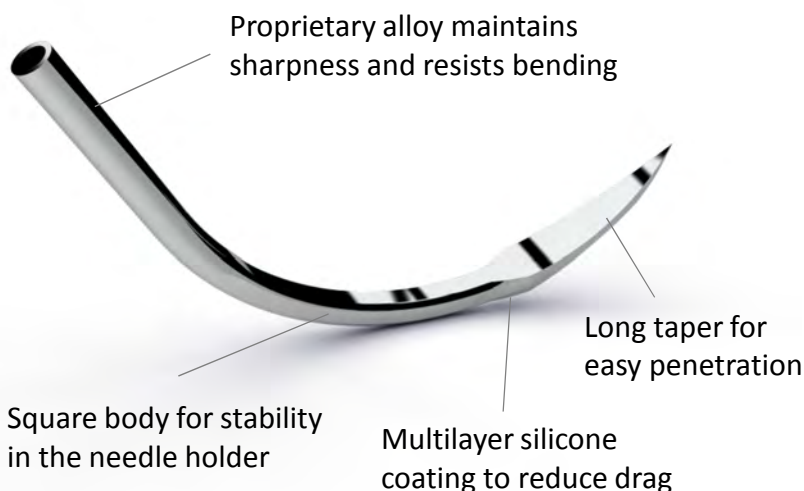
Suture Knots vs Quill™ Barbs



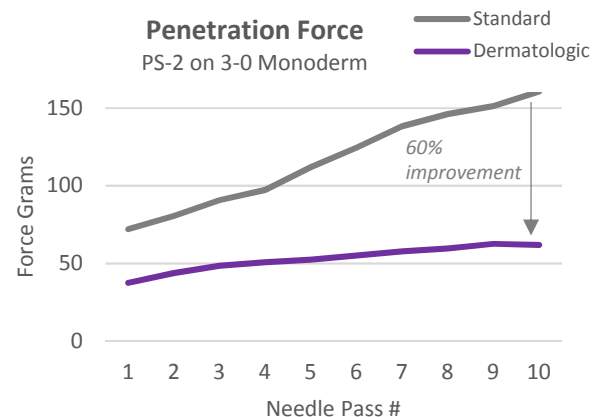
Wound tension is distributed across eight (8) barbs per cm reducing the force as compared to a single suture knot.

The Quill™ knotless tissue closure device is designed with barbs that engage the tissue and evenly distribute tension across the wound.

A needle designed for **control** during dermatologic reconstruction.

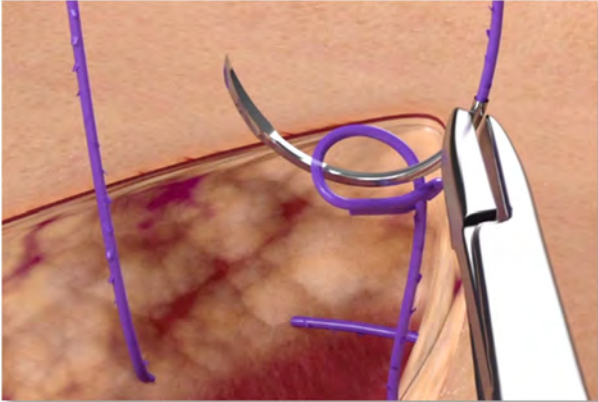


## 60% improvement in penetration



Testing performed by independent lab. Acculine Engineering; Waterbury, CT

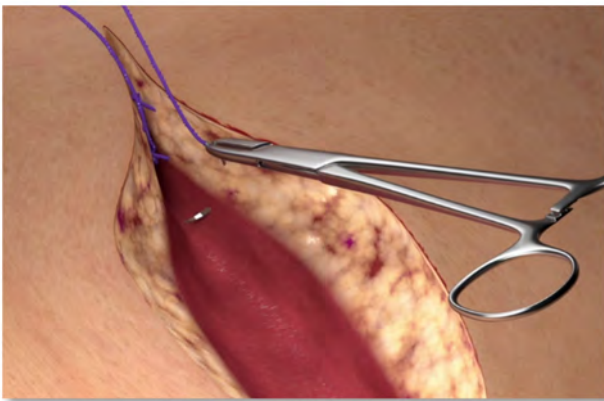
# Basic Quill™ Closure Technique



## Step 1 Anchor the Quill Device

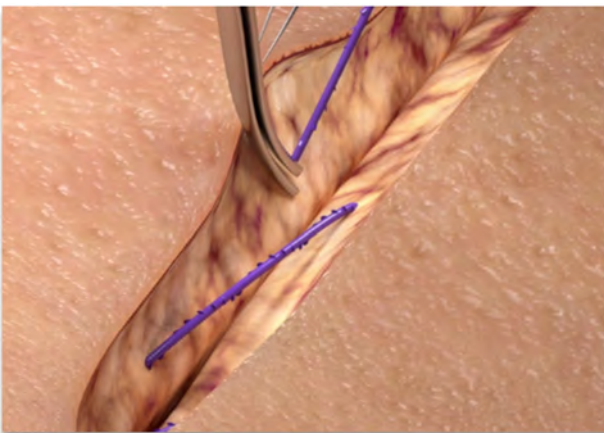
With the Quill™ device needle, take initial bite of tissue. Then, pass the needle through the variable loop. Cinch down to engage the barbs at the fixation point.

Watch this two layer closure surgical animation at [QuillDevice.com/Derm](http://QuillDevice.com/Derm)



## Step 2 Run the Stitch

Continue approximating the tissue in a running fashion until the opposite end of the wound is reached.



## Step 3 Lock the Stitch

Secure the end by employing a few backstitches and cut the remaining Quill™ flush with the tissue to complete.

If approximating the subcuticular layer, exit laterally and cut flush with the skin.

## Dermatologic Surgeon Testimonials

**John Strasswimmer, M.D.**  
Delray Beach, FL

*I can now close wounds that would normally require a skin graft by using Quill PDO on the deep subcutaneous layer to reduce tension followed by Quill Monoderm subcuticularly.*



**Helen Raynham, M.D.**  
Boston, MA

*Quill is my "go-to" suture for any linear closure whether it be on the face, trunk, or extremities. My closures are quicker and cheaper with Quill sutures. Cosmetic outcomes are excellent.*




**Keith LeBlanc, M.D.**  
New Orleans, LA

*Quill saves time, especially on large closures and in elderly patients with friable skin. It has been a game changer for repair of these defects.*

# Quill™ Knotless Tissue Closure Device for Dermatologic Reconstruction



## Monoderm™ (PGA-PCL)

				USP Size (Box of 12)		
Fine Reverse Cutting Needle 	Color	Length		4-0	3-0	2-0
<b>P-3</b> 13mm 3/8 Circle	Undyed	20cm		VLM-3001	VLM-3002	
		30cm			VLM-3003	
<b>PS-2</b> 19mm 3/8 Circle	Undyed	20cm			VLM-3007	VLM-3009
		30cm			VLM-3008	VLM-3010

## PDO (polydioxanone)

				USP Size (Box of 12)		
Fine Reverse Cutting Needle 	Color	Length		4-0	3-0	2-0
<b>P-3</b> 13mm 3/8 Circle	Violet	20cm			VLP-3021	
		30cm			VLP-3022	
<b>PS-2</b> 19mm 3/8 Circle	Violet	20cm			VLP-3026	VLP-3027
		30cm				VLP-3028
<b>PS-1</b> 24mm 3/8 Circle	Violet	30cm				VLP-3029

As with traditional sutures, the Quill™ device suture size is determined by its OUTER diameter. It is therefore recommended that when using the Quill™ device, you upsize by one USP compared with traditional suture. For example if previously using a 3-0 traditional suture, we recommend using a 2-0 Quill™ device.

Material Guide	Description	BSR Profile	Mass Absorption
Monoderm™ (PGA-PCL)	Absorbable Monofilament Undyed (clear)	In vivo strength retention: 42% to 76% at 7 days 36% to 52% at 14 days	Essentially complete between 90 and 120 days
PDO (polydioxanone)	Absorbable Monofilament Dyed (violet)	In vivo strength retention: 80% at 2 weeks 60% at 4 weeks 40% at 6 weeks	Minimal until approximately 120 days Essentially complete by 180 days

Call Customer Service at **877-991-1110**.

Quill™ is available through major healthcare distributors.

For More Information, Visit [QuillDevice.com](http://QuillDevice.com)

Surgical Specialties Corporation, 247 Station Drive, Suite NE1, Westwood, MA 02090, U.S.A.  
 Phone: 610.404.3520 • 877.991.1110 (USA and Canada only) • Fax: 610.404.4010  
 All trademarks are owned by the company and its affiliates. ©2018 Surgical Specialties Corporation.  
 All Rights Reserved. SSC-088 R0 11/17

